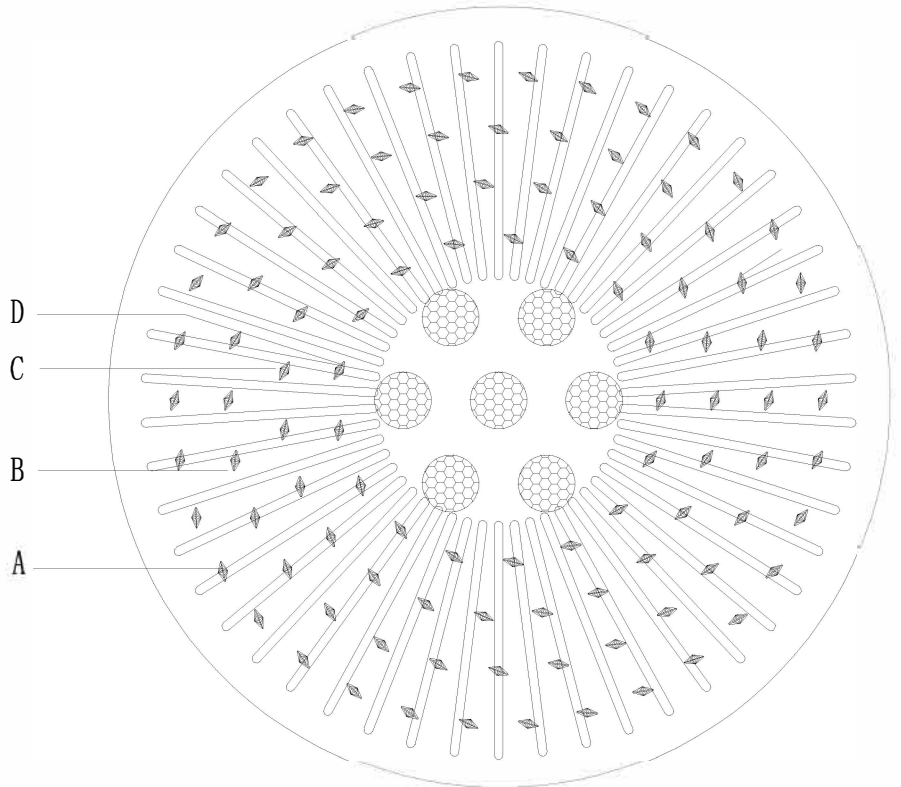
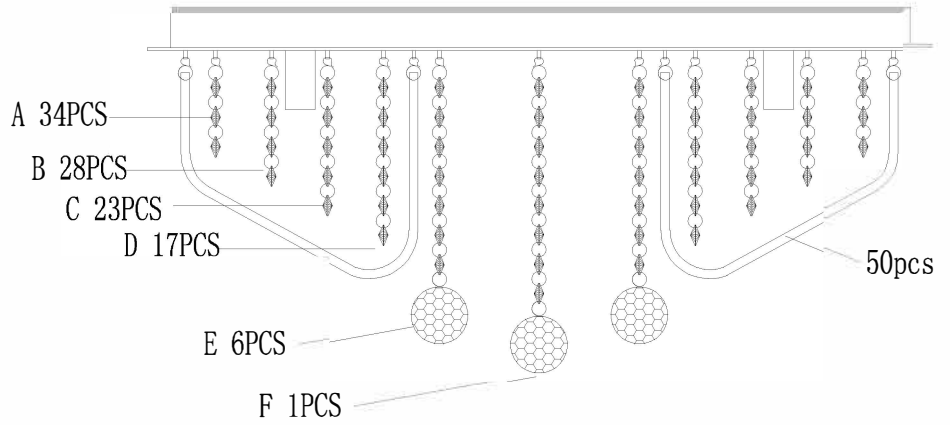
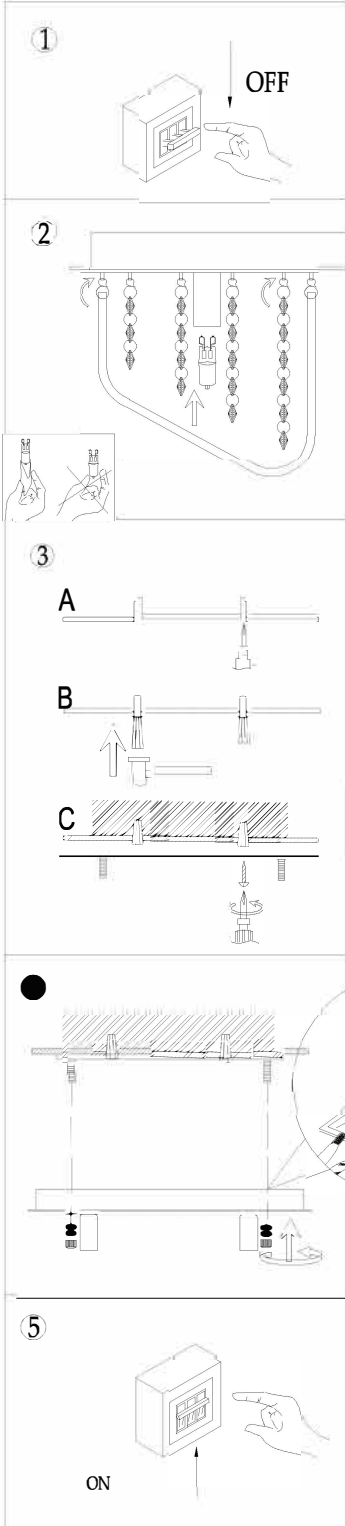


ITEM NO.:PINTOR CTC9-CH

ASSEMBLE BEFORE INSTALLATION, TAKE CARE WHEN MOUNTING ON CEILING



- Disclaimer:
- Tools not included
 - Shade ring attached on lamp holder
 - Globe(s) not included

IMPORTANT

Must be installed
by a qualified
electrical contractr.
Install in accordance
with AS/NZ3000

240V~50Hz G9 Max33W*9

NOTE: GLOBE INCLUDED



Telbix.