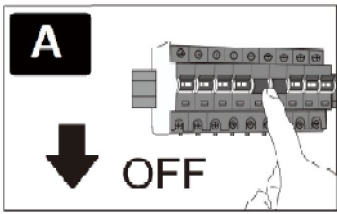
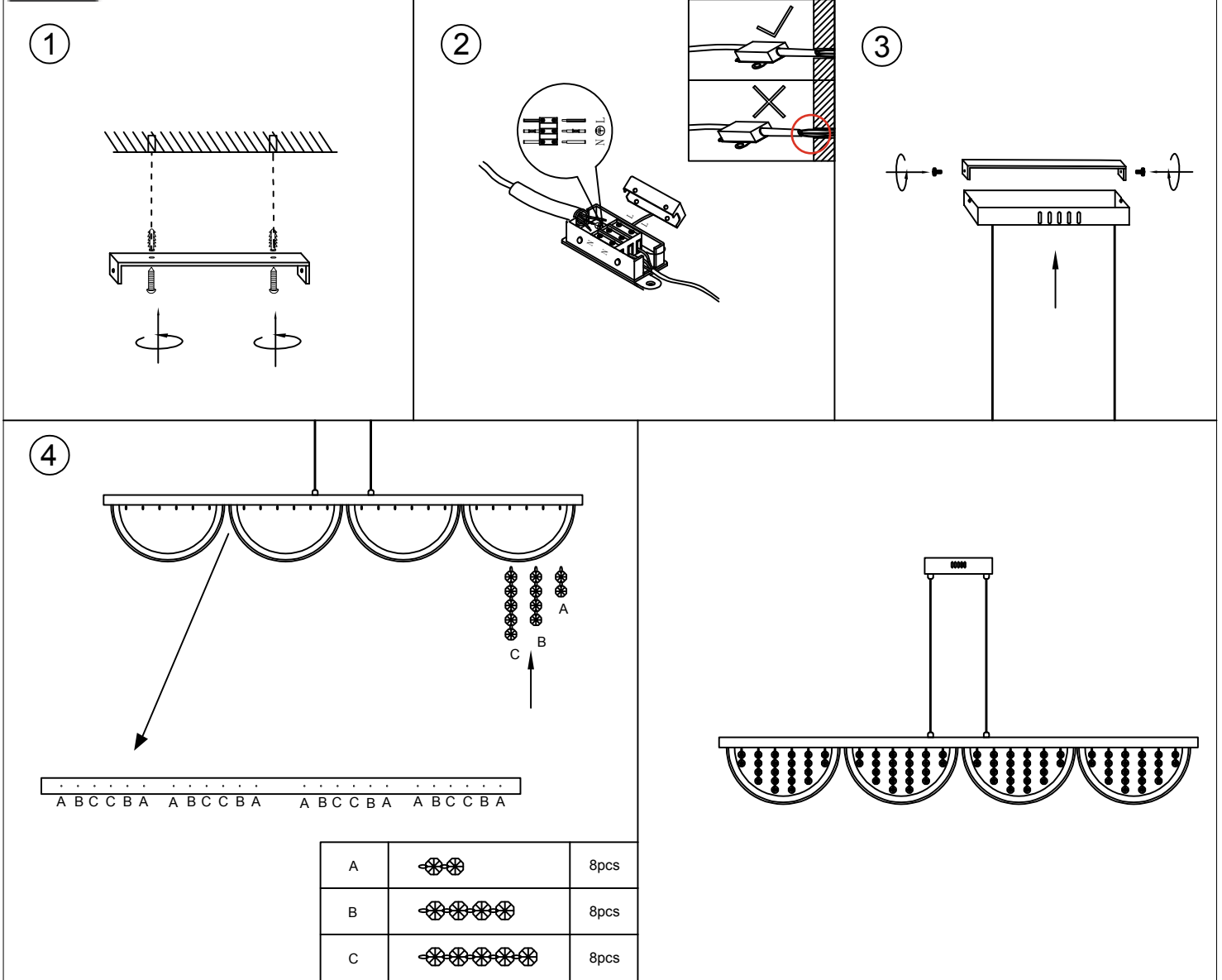


ITEM NO.: LUXIA PE120-RGB

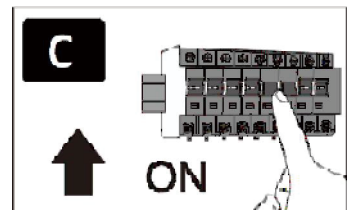


B



IMPORTANT
 Must be installed by a qualified electrical contractor.
 Install in accordance with AS/NZS3000

Disclaimer:
 Tools not included



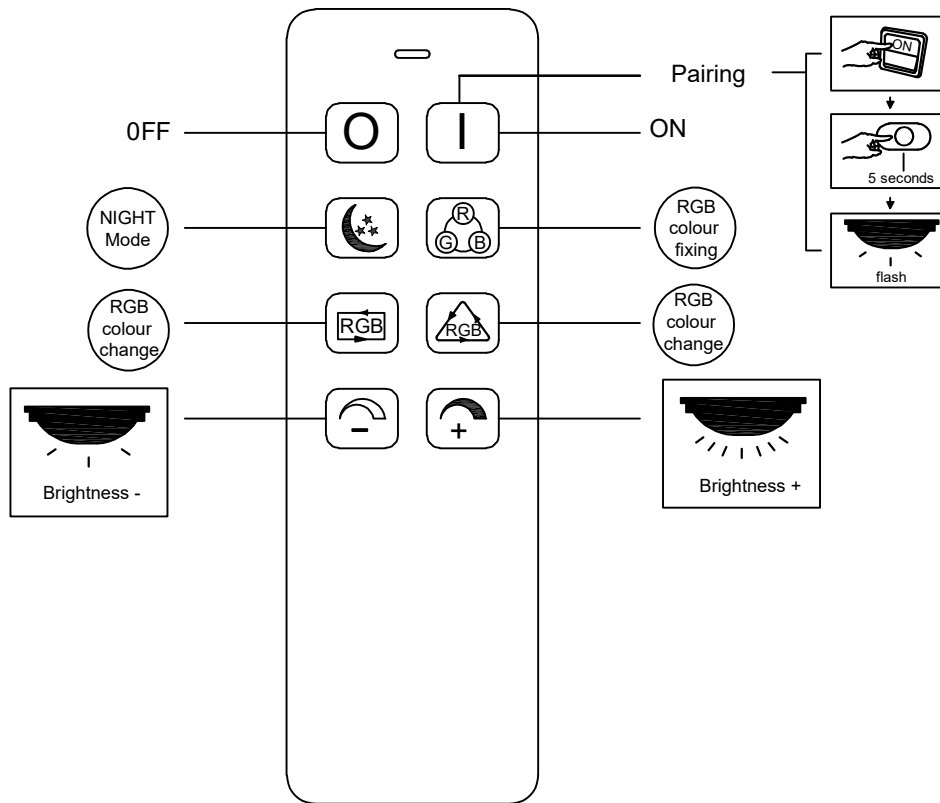
240V~50Hz 28W LED - 4000K



telbix.

IP20

LUXIA Remote Control



Pairing: Turn the light ON from the switch, and press ON button from the remote 2x (twice) within 5 seconds.

If the light goes OFF pairing is successful.

If the pairing is unsuccessful, you should turn the light OFF for 5 seconds, then try again.

RGB Colour Fixing: Change to Red/Green/Blue colour sequence manually.

RGB Colour Change: Change to Red/Green/Blue colour sequence automatically.