

INSTALLATION

Bliss XL Oyster

Specification	BLISS 60XL.R-3C	BLISS 77XL.R-3C	BLISS 97XL.R-3C
Item Name	BLISS 60XL.R-3C	BLISS 77XL.R-3C	BLISS 97XL.R-3C
Watt	50	80	80
Dimmable	Yes		
Input	240 v	240 v	240 v
Lumen	4200	6400	6700
CCT	3000k - 4000k - 5500K		
Diameter	600	770	970
Height	117	134	156



GENERAL INSTRUCTIONS

Please read the operating instructions for this luminaire before use. The operating instructions are part of the product. They contain important notes on start-up and handling of the fixture. Always keep the enclosed operating instructions. They should be passed on to third parties.

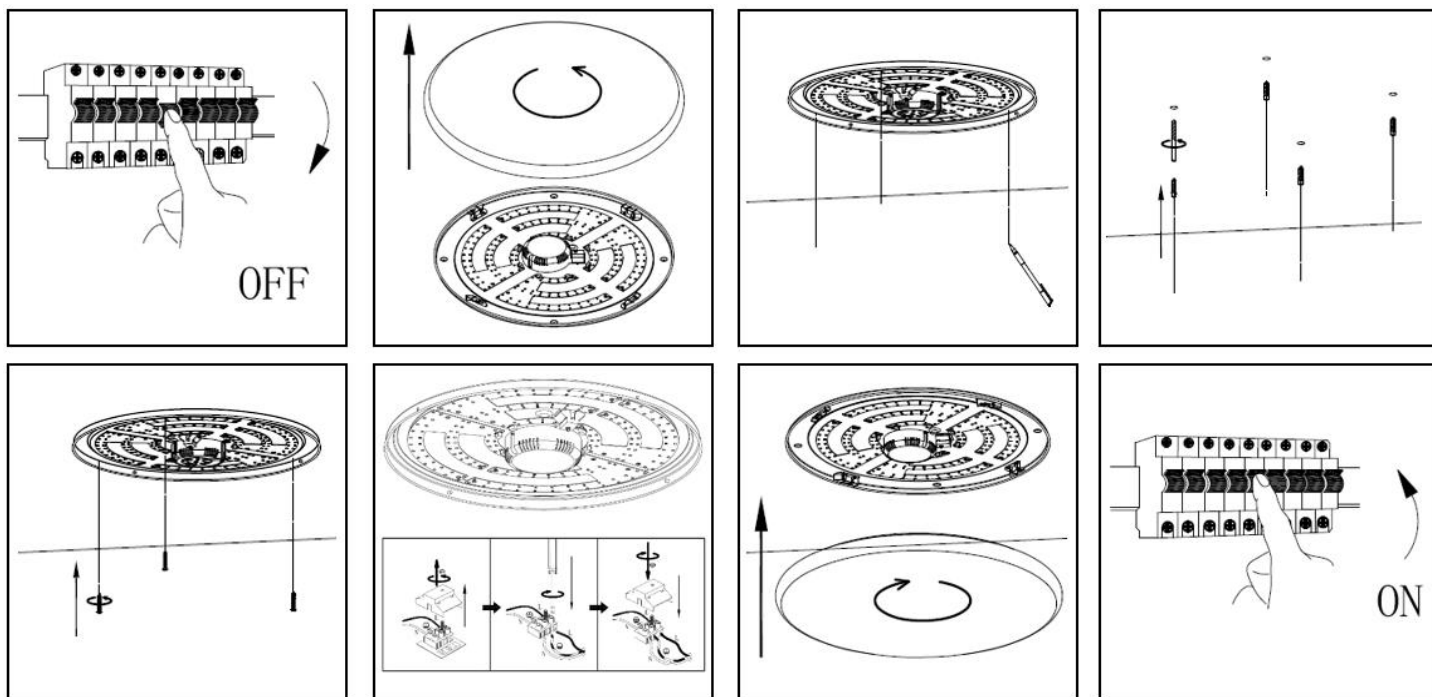
SAFETY PRECAUTIONS

The user must observe the safety notes and warnings in order to maintain and ensure safe operation. Ensure sufficient ventilation of the device. Never cover it during operation. Do not instal in reach of children. Any use of the device other than described above can damage the product or endanger the user due to electric shock, fire or short circuit. The entire product may not be modified.

Installations must be performed by a qualified Electrical Contractor in accordance of the current wiring standard AS/NZS 3000. **3 YEAR REPLACEMENT WARRANTY*** with Proof of purchase and electrical installation certificate.

CARE and WARRANTY

Before cleaning the fixture, disconnect it if necessary from other components, do not use aggressive cleaning agents. The fixture has been carefully checked for defects. If you do find a quality or operational issue, please advise your reseller together with your proof of purchase and installation certificate. We reserve the right to make technical modifications.



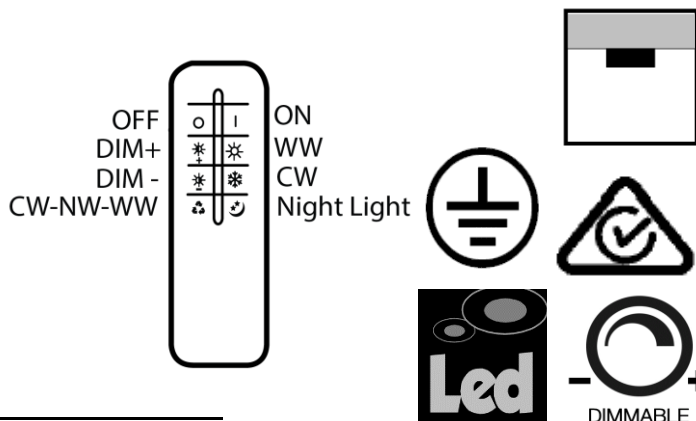
Remote pairing manual

The remote control can be pair to any BLISS range

Connect: Switch on the light at the wall. With the remote immediately press the button "ON" 3 times, within "1" second. The light will confirm pairing process with a flash.

Disconnect: Switch on the light at the wall, With the remote immediately press the button "OFF" 6 times, within "1" second. The light will confirm the process with five flashes.

BLISS XL is fitted with an electronic change over switch, color temperature can be controlled by switching the power supply "on" & "off" within 1 sec



Contact us : 03 9309 9060 or sales@telbix.com

WARRANTY

TELPIX LED FIXTURES are covered by a

*THREE YEAR REPLACEMENT WARRANTY (domestic installations)

TWO year replacement warranty (commercial installations)

as stated on the terms and conditions herein.

Please also note warranty requirements will need the following details :

model number

the production number (P#)

date of purchase

place of purchase

Copy of receipt of purchase

Copy of Electrical contractors compliance certificate.

WARRANTY PERIOD

The warranty only applies if the products have been installed in accordance with the installation instructions included with the product.

The *THREE YEAR REPLACEMENT WARRANTY applies to domestic use only , commencing from date of purchase.

Copies of receipts of purchase and Electrical contractors compliance certificates are required.

WARRANTY CONDITIONS ON TELPIX LED PRODUCTS

- 1 Telbix warrants that the LED products you have purchased are free from manufacturing defects in materials and workmanship when dispatched from our warehouse. The receipt of purchase shall be provided as proof of the date of purchase and the warranty period commences as of that date.
- 2 The warranty also requires that electrical installations must be completed in accordance with AS/NZS 3000 and to this affect a copy of the Electrical Compliance Certificate for the said products must be provided.
- 3 During the warranty period, Telbix must be notified in writing of any claim prior to any return or rectification of products.
- 4 Proof of purchase will be required in the event of any discrepancy.
- 5 The warranty automatically becomes void if the product has been physically damaged or rendered defective –
 - (a) as a result of an accident, misuse, fire, lightning, malicious damage, water damage, abuse or other circumstances beyond the control of Telbix;
 - (b) by the use of parts or peripherals not authorized by Telbix;
 - (c) by use in an improper operating environment;
 - (e) by modification of the product;
 - (f) by the serial number or product code sticker being removed or defaced;
 - (g) as a result of a service by anyone other than Telbix authorized service agents;
 - (h) by use on an incorrect voltage, power surges and dips.
- 6 Telbix authorized service agents (if required) will be chargeable at current applicable hourly rates to the customer if –
 - (a) the technician finds the problem is user related;
 - (b) caused by change in normal settings of the original product
 - (c) determined to be causes not covered by this warranty and/or fallen within the scope as prescribed in item 5.
- 7 The customer must ensure that they are available if a service representative arrives to carry out warranty inspection. Any additional visits made due to the customer's unavailability will be chargeable to the customer.
- 8 This warranty applies to the original purchaser only and is not transferable.
- 9 This warranty does not apply if goods were purchased from a clearance centre, auction house or goods were sold as samples or seconds.

LIMITATION OF LIABILITY

Telbix warrants that the product you have purchased is free from manufacturing defects in materials and workmanship when dispatched from our warehouse. In Australia: Provisions of the Competition and Consumer Act 2010 (Commonwealth) as amended and other State legislation may imply warranties or conditions or impose obligations upon Telbix which cannot, in whole or in part, be excluded, restricted or modified. To the extent permitted by law, Telbix's liability (if any) arising out of or in relation to the products supplied by Telbix shall be limited, as its option, to: in the case of products, the replacement or repair of the products or the supply of equivalent products, or the payment of the cost of replacing the products or having the products repaired or of acquiring equivalent products.

Contact us : 03 9309 9060 or sales@telbix.com