

## Astra Trio LED Cabinet Light

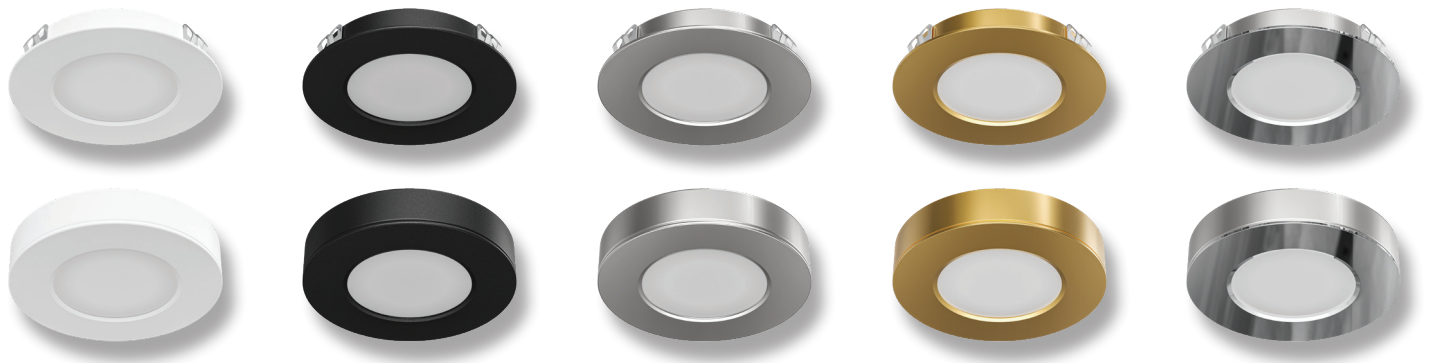


### Description

Introducing the ASTRA LED cabinet lighting series. The ASTRA is an alternative to the traditional halogen light sources. The ASTRA features a high output LED package to offer superior performance and light over the working area whilst only consuming a total 3.6W of energy. The ASTRA offers two mounting options to cover a wide range of applications.

These include recessed mounting or surface mounting. Smooth even lighting is provided from a single light point and frosted lens.

Available in White, Black, Silver, Satin Brass and Polished Chrome colour options. Tricolour switchable: choose between Warm White 3000K, Neutral White 4000K, or White 5000K colour temperatures with the flick of a dip switch. Requires 12V DC Constant Voltage LED Driver.



### Specification Features

Input Voltage:	12V DC*
Power (W):	3.6W
IP rating (IP):	IP20
Lumens (lm):	Warm White 3000K - 200lm Neutral White 4000K - 230lm White 5000K - 205lm
LED type:	SMD
CCT:	3000K - 4000K - 5000K (Switchable)
CRI:	≥80
Beam angle (°):	110°
Dimmable:	Yes
Lifespan (hrs):	50,000hrs
Cutout (Ø):	Ø65mm

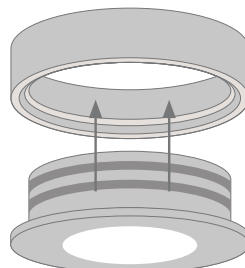
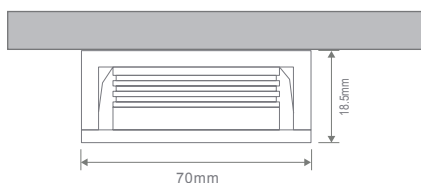
\* 12V DC Constant Voltage LED Driver required - Wire in Parallel



Item No.	Variant					CCT
	Wht	Blk	Slr	Sbr	Chr	
ASTRA-TRIO	21516	21517	21518	21519	21520	TRIO

### Diagrams / Additional

#### Surface Mounted Application:



#### Recessed Application:

