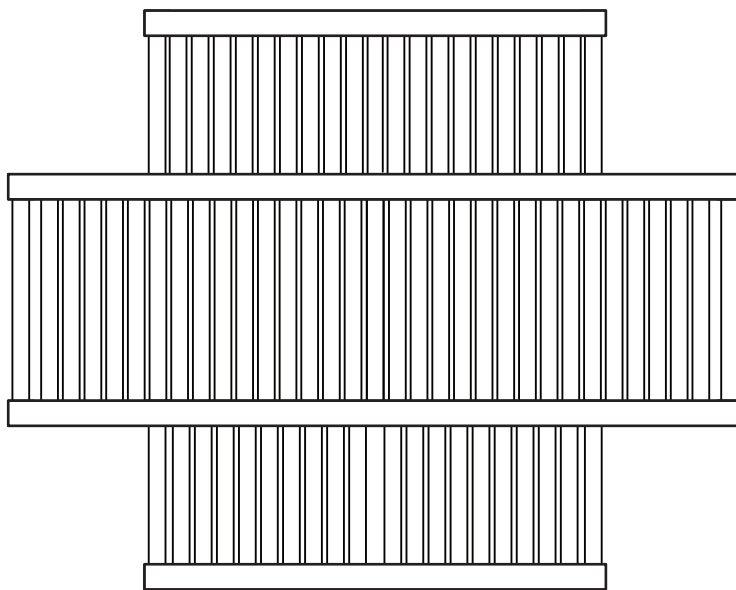

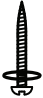
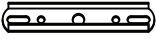


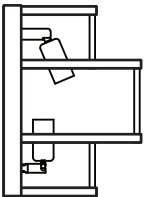


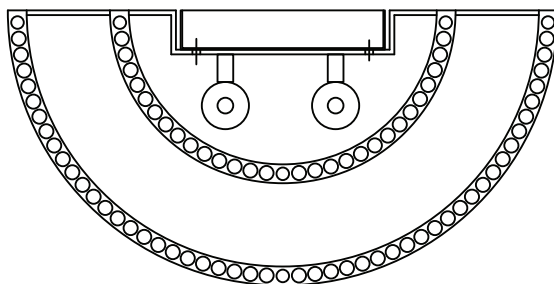
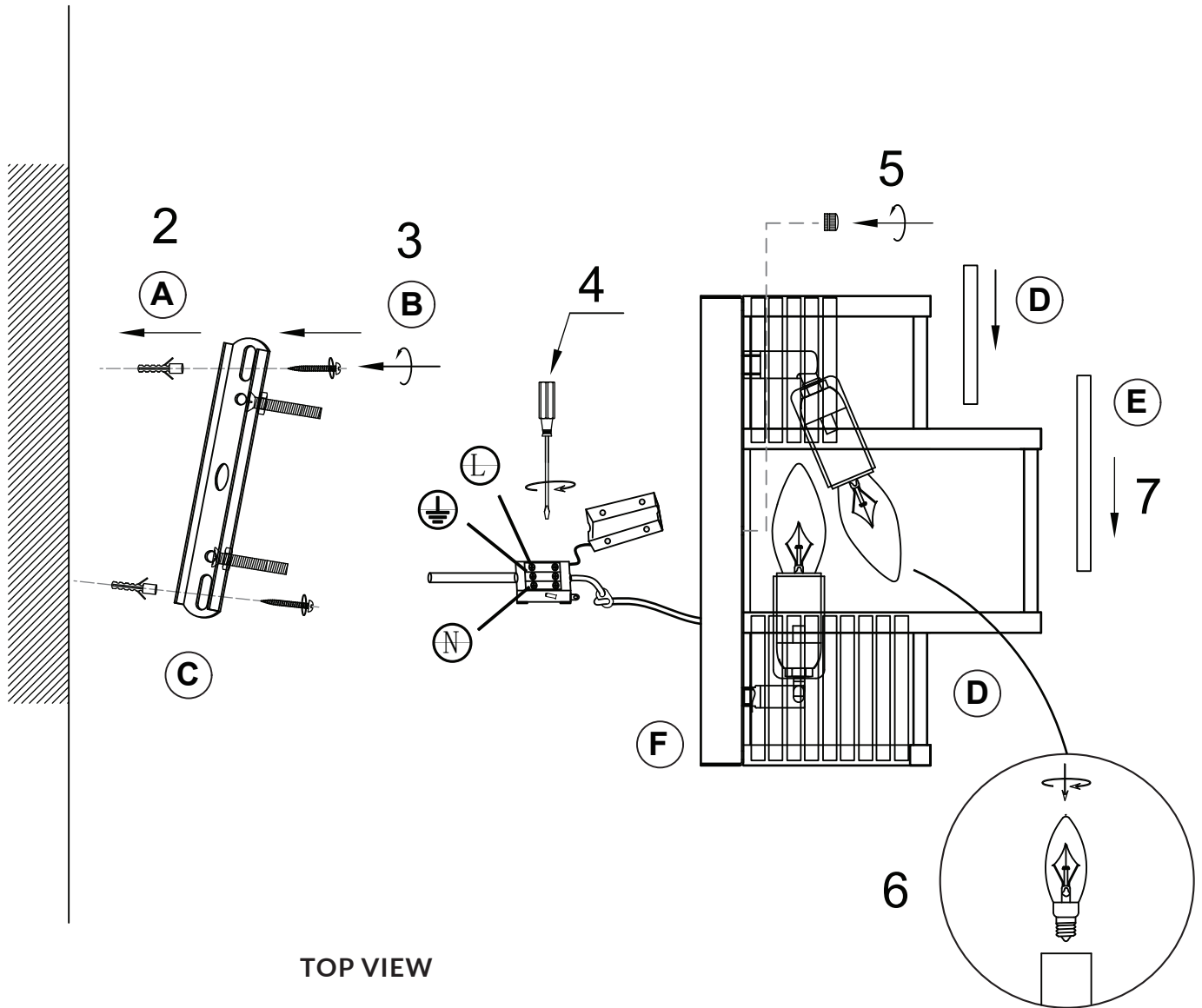
Assembly Instructions

FONTAINE WALL SCONCE



Component Checklist

REF	A	B	C	D	E	F
PART						
NAME	Wall Plug	Screw	Wall Bracket	Glass Rod	Glass Rod Long	Sconce Frame
QTY	4	4	1	56	48	1



Bulb not included



NOTE: THIS ITEM MUST BE INSTALLED BY A LICENSED ELECTRICIAN

WARNING: Switch off the main electrical supply at the main fuse box / circuit breaker before installation.

- ① Carefully remove all the parts from the box.
- ② **Due to its weight, this pendant must be installed to a timber wall stud.**
 - Remove mounting bracket (C) from the back plate of wall sconce by unscrewing the knobs attached to the front side of the wall plate.
 - Drill holes into the wall, in line with timber stud, according to the size of mounting bracket screws and in line with holes in mounting bracket (C).
 - Insert ceiling plug (A) into the drilled holes in timber wall stud.
- ③ Fix mounting bracket (C) to the timber wall stud using screws (B).
- ④ **ENSURE THE ELECTRICITY SUPPLY IS TURNED OFF.**

Connect the 3 power wires from the wall sconce to the power wires in the wall.

 - Brown is the Live wire.
 - Blue is the Neutral wire.
 - Green/Yellow is the Earth wire.
- ⑤ Attach wall sconce frame (F) to the mounting bracket (C).

Secure wall sconce frame (F) by screwing wall plate cap knobs onto the mounting bracket screws.
- ⑥ Insert E14 globes into the lamp holders, screwing in until they are firm (globes not included).
- ⑦ Unwrap individual glass rods (D) and carefully insert into the individual holes in the upper and lower part of wall sconce frame (F).

Unwrap individual glass rods (E) and carefully insert into the individual holes in the middle part of wall sconce frame (F).
- ⑧ Once glass rod placement is complete, turn the electricity supply back on and enjoy!